

name: _____

MUS 371

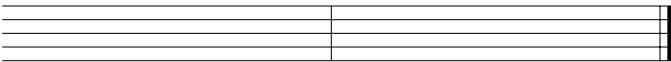
TRANSPOSITION WORKSHEET 1 - PART 1

concert pitch example



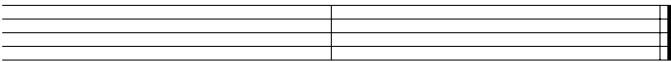
1. transpose for Bb clarinet

Briefly discuss how well this excerpt transposes for this instrument:



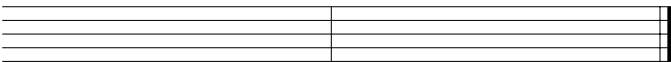
2. transpose for piccolo

Briefly discuss how well this excerpt transposes for this instrument:



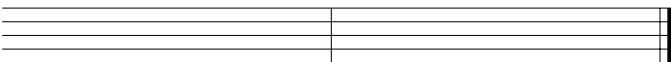
3. transpose for bass clarinet/tenor sax

Briefly discuss how well this excerpt transposes for this instrument:



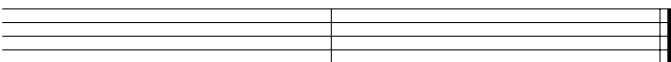
4. transpose for Eb alto saxophone

Briefly discuss how well this excerpt transposes for this instrument:



5. transpose for Eb sopranino clarinet

Briefly discuss how well this excerpt transposes for this instrument:



TRANSPPOSITION WORKSHEET 1 – PART 2

Provide the following transpositions (directly to this page or provide an attached hand-notated manuscript). You cannot use a notation software program for this assignment:

Written

B♭ Cl.

Sounding

This exercise is for a B♭ Clarinet. The 'Written' staff is in 2/4 time and contains four groups of triplets, each with a slur and a '3' below it. The first triplet is in B-flat major (two flats). The second triplet is in B-flat major (two flats). The third triplet is in B major (two sharps). The fourth triplet is in B major (two sharps). The final measure of the written staff is a quarter note G4. The 'Sounding' staff is empty.

Written

Eng. Hn.

Sounding

This exercise is for an English Horn. The 'Written' staff is in 4/4 time and contains a single melodic line with various intervals and accidentals. The first measure is a quarter note D4. The second measure is a quarter note E4. The third measure is a quarter note F#4. The fourth measure is a quarter note G4. The fifth measure is a quarter note A4. The sixth measure is a quarter note B4. The seventh measure is a quarter note C5. The eighth measure is a quarter note D5. The ninth measure is a quarter note E5. The tenth measure is a quarter note F#5. The eleventh measure is a quarter note G5. The twelfth measure is a quarter note A5. The thirteenth measure is a quarter note B5. The fourteenth measure is a quarter note C6. The 'Sounding' staff is empty.

Written

Bar. Sax.

Sounding

This exercise is for a Baritone Saxophone. The 'Written' staff is in 2/4 time and contains a single melodic line with various intervals and accidentals. The first measure is a quarter note D4. The second measure is a quarter note E4. The third measure is a quarter note F#4. The fourth measure is a quarter note G4. The fifth measure is a quarter note A4. The sixth measure is a quarter note B4. The seventh measure is a quarter note C5. The eighth measure is a quarter note D5. The ninth measure is a quarter note E5. The tenth measure is a quarter note F#5. The eleventh measure is a quarter note G5. The twelfth measure is a quarter note A5. The thirteenth measure is a quarter note B5. The fourteenth measure is a quarter note C6. The 'Sounding' staff is empty.

Written

Alt. Sax.

Sounding

This exercise is for an Alto Saxophone. The 'Written' staff is in 4/4 time and contains a single melodic line with various intervals and accidentals. The first measure is a quarter note D4. The second measure is a quarter note E4. The third measure is a quarter note F#4. The fourth measure is a quarter note G4. The fifth measure is a quarter note A4. The sixth measure is a quarter note B4. The seventh measure is a quarter note C5. The eighth measure is a quarter note D5. The ninth measure is a quarter note E5. The tenth measure is a quarter note F#5. The eleventh measure is a quarter note G5. The twelfth measure is a quarter note A5. The thirteenth measure is a quarter note B5. The fourteenth measure is a quarter note C6. The 'Sounding' staff is empty.

TRANSPPOSITION WORKSHEET 1 – PART 3

For the following two (2) quartet-orchestration examples, detect any orchestration errors, including transpositions, accidentals, and wrong notes, when compared to the original piano excerpt. Write your corrections directly on this worksheet. You cannot use a notation software program for this assignment:

Chopin, Nocturne, Op. 37, No. 1, mm. 1-7

Beethoven, Piano Sonata, Op. 27, No. 2 ("Moonlight"), second movement, mm. 8-16