

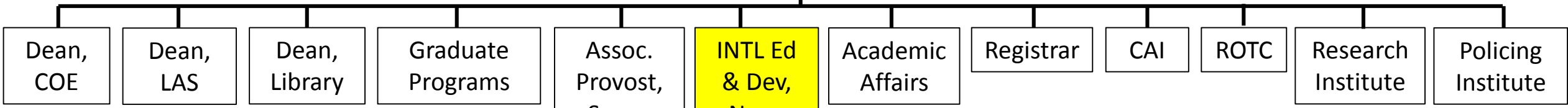
International Student Academic Support

Director, Rob Troyer

Report to Faculty Senate

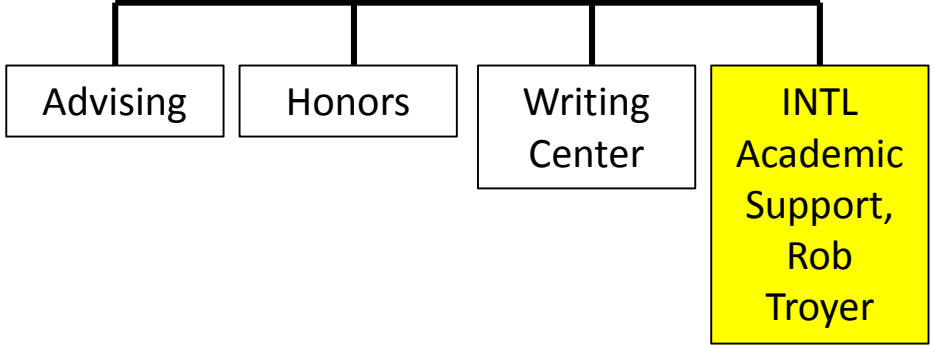
May 2018

Provost, VP Academic Affairs



Assoc. Provost, Susan Monahan

INTL Ed & Dev, Neng Yang

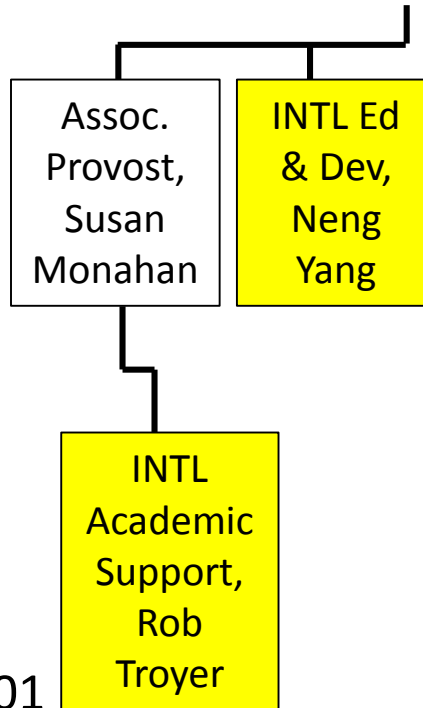


Advising

Honors

Writing Center

INTL Academic Support, Rob Troyer



Office of International Student Academic Support

Director (.5 fte) + 1 full-time staff, APS 501

Coordinate Courses

- ICS 110: First Year Exp for INTL Students
- WR 115 and 122 for INTL Students
- LING 136: Academic Discourse for INTL Students

English Tutoring Center

Conversation Partners

Educational Advising

Technology & Test Proctoring

Consultation with Faculty

Office of International Education and Development

Director + 5 full-time staff, Maaske Hall

International Students

- Recruiting and INTL Agreement Programs
- Admissions
- Immigration
- Initial Orientation
- International Advising
- International Club, Saudi Club, Chinese Students and Scholars Association

Study Abroad

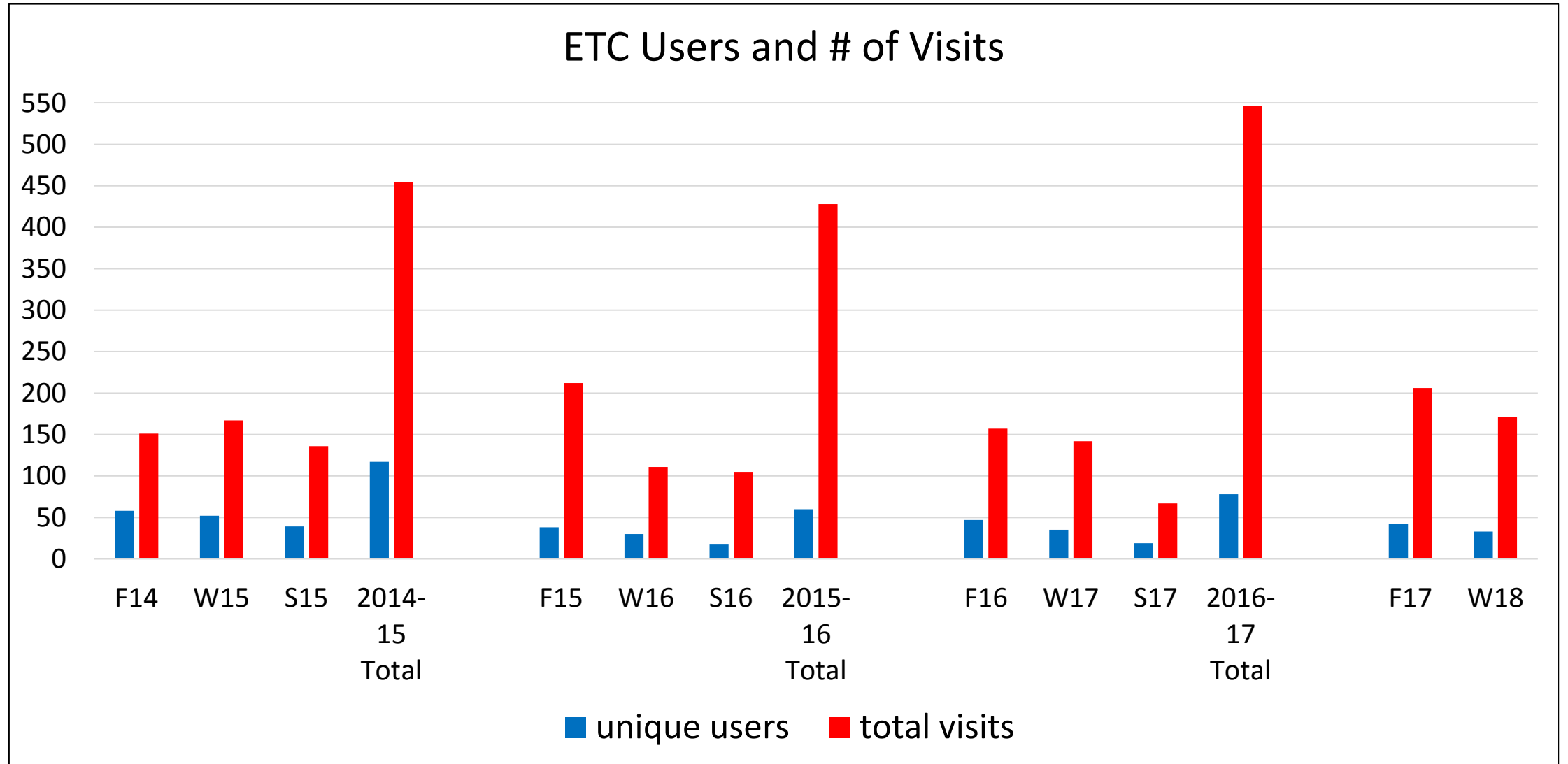
Visiting Scholars

English Tutoring Center:

Reading Comprehension, Speaking, Listening, Grammar, Paraphrasing

32 hours per week (Mon-Thurs: 12-5pm APS 501, 7-10pm Library 228)

Tutors are students in the Teaching English as a Foreign Language Certificate Program

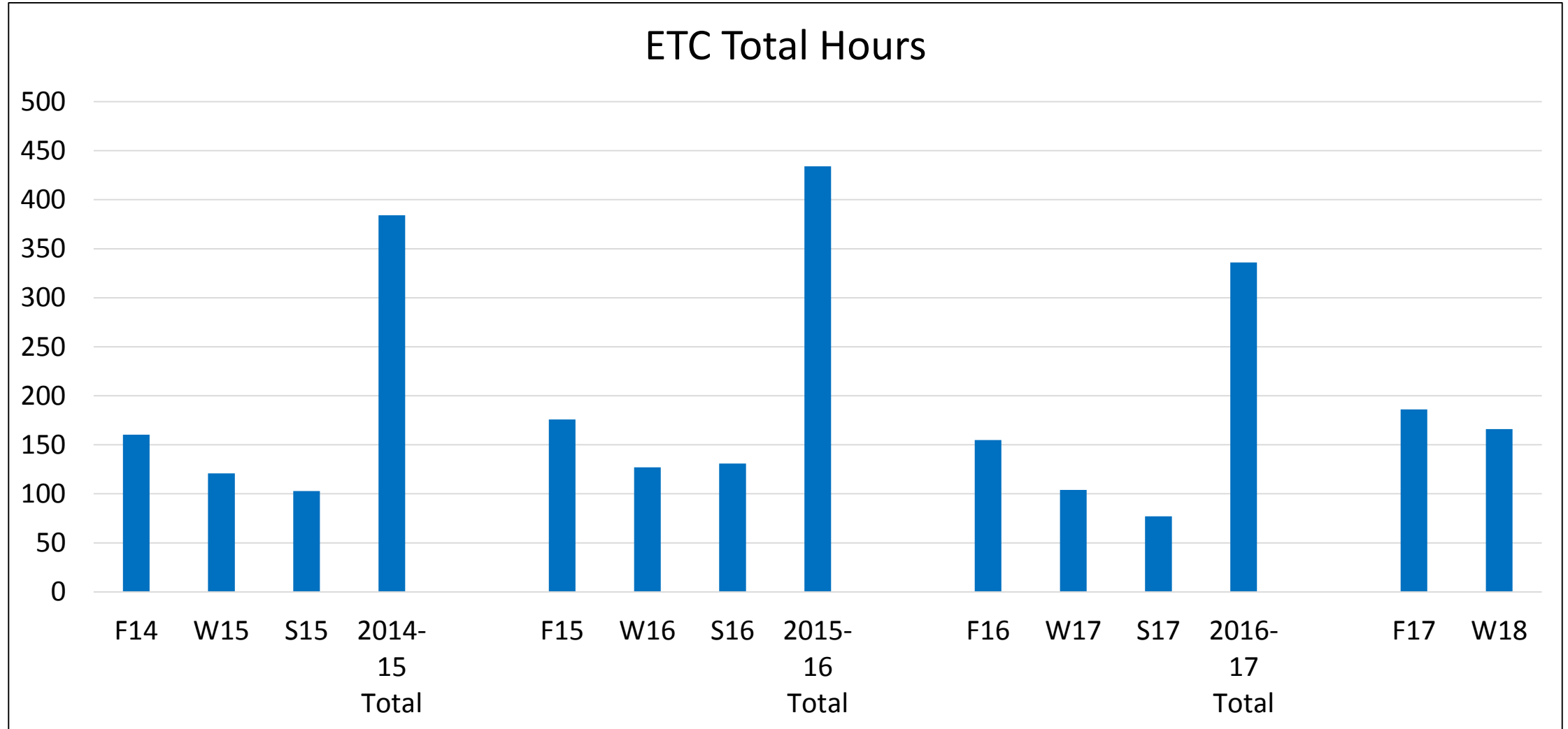


English Tutoring Center:

Reading Comprehension, Speaking, Listening, Grammar, Paraphrasing

32 hours per week (Mon-Thurs: 12-5pm APS 501, 7-10pm Library 228)

Tutors are students in the Teaching English as a Foreign Language Certificate Program

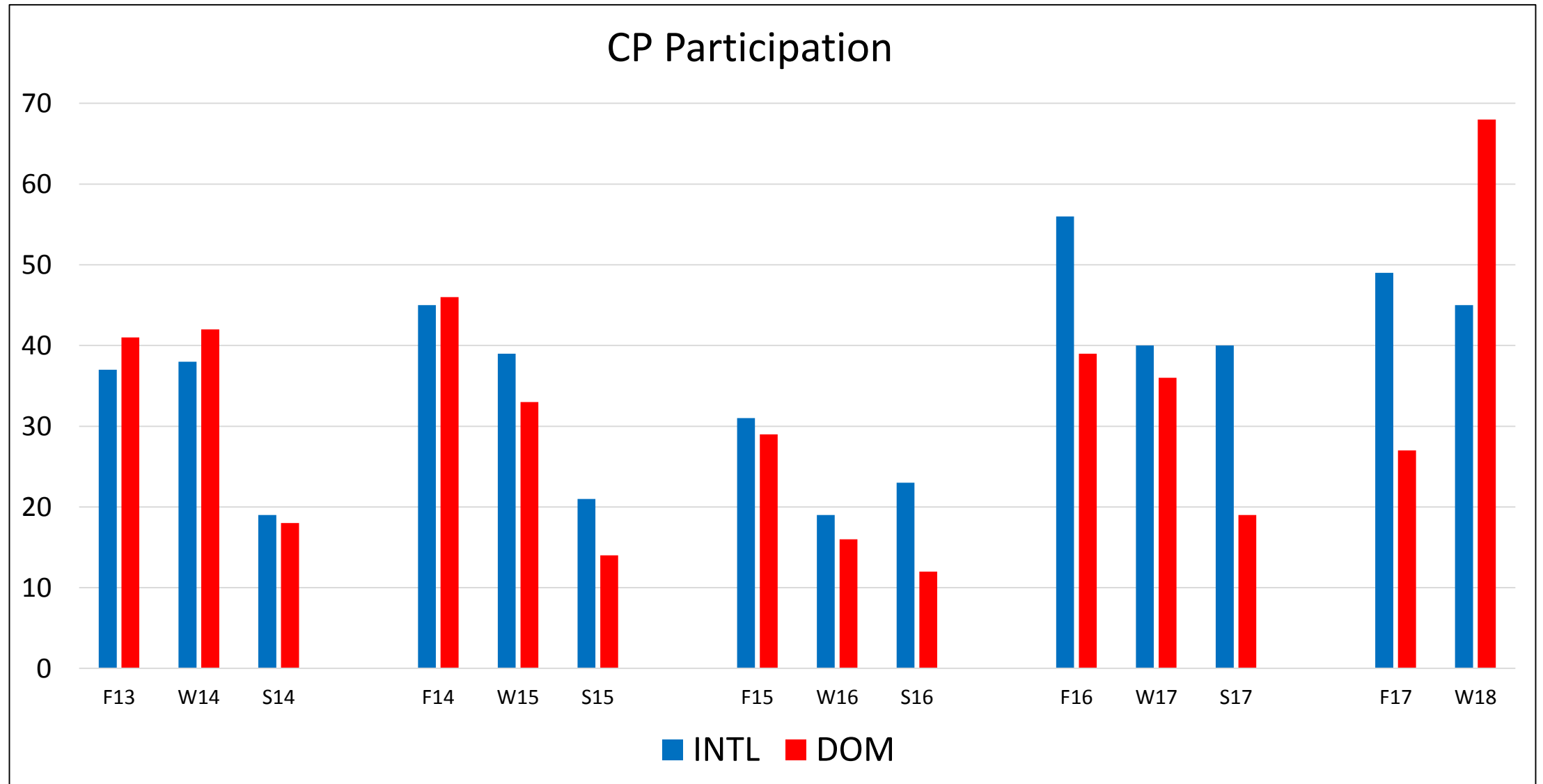


Conversation Partners:

Weekly informal 1-on-1 or small group conversation (once/week, apprx 1 hr)

Weeks 1-2: sign-up, Week 3: First Meeting Welcome Party

Weeks 4-Finals: weekly meetings



Educational Advising


Qin Ma

- Primary instructor of ICS 110
- Tracks INTL student academic standing
 - proactively engages with struggling students
 - coordinates with Student Success team
- Academic advising, Registration, and Acculturation assistance
- Assists with coordination and promotion of Conversation Partners, English Tutoring Center, Test proctoring, Technology
- Listening

Home - International Stu... X
www.wou.edu/internationalsupport/

International Student Academic Support

SUCCESS STORIES APPLY TO STUDY AT WOU FACULTY SERVICES RESEARCH IN THE NEWS PEOPLE



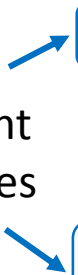
Tutoring	Campus Connections	Advising
English Tutoring Center	Conversation Partners	Academic Advising
Writing Center	Clubs and Organizations	Required Courses for International Students
The Learning Center	Health and Counseling Center	Office of International Education and Development
Request an Electronic Dictionary/Translator	Health and Wellness Center	

Welcome to the Office of International Student Academic Support

[CURRENT STUDENTS](#) | [ALUMNI](#) | [EMPLOYEES](#) | [MAP](#) | [GIVE](#)

[APPLY](#) | [GET INFO](#) | [VISIT US](#) [f](#) [i](#) [t](#) [v](#)

Our student services



Home - International Stu x
www.wou.edu/internationalsupport/


International Student Academic Support

SUCCESS STORIES APPLY TO STUDY AT WOU **FACULTY SERVICES** RESEARCH IN THE NEWS PEOPLE

What Should I Know
About International Students?


Tips
for Teaching

Test
Proctoring



Tutoring	Campus Connections	Advising
English Tutoring Center	Conversation Partners	Academic Advising
Writing Center	Clubs and Organizations	Required Courses for International Students
The Learning Center	Health and Counseling Center	Office of International Education and Development
Request an Electronic Dictionary/Translator	Health and Wellness Center	

Welcome to the Office of International Student Academic Support



[CURRENT STUDENTS](#) | [ALUMNI](#) | [EMPLOYEES](#) | [MAP](#) | [GIVE](#)

[APPLY](#) | [GET INFO](#) | [VISIT US](#) | [f](#) | [Instagram](#) | [Twitter](#) | [YouTube](#)

www.wou.edu/internationalsupport/faculty-services/

Technology

Electronic Dictionaries

- Available for 4-hour check-out from the Library
- No internet connection
- No internal storage

Smartpens

- Available for term check-out
- Record lectures with audio synched to handwritten notes
- Being replaced with mobile apps with similar functionality

Consultation with Faculty

Individual

- Email, phone, face to face
- Questions regarding language and intercultural communication
- Student focus and/or Instructor focus

with Students

- Facilitate meetings between instructor and one or more students
- Clarification of coursework and behavioral expectations

Consultation with Students